





Elemental - incremental housing in open source - Alejandro ARAVENA

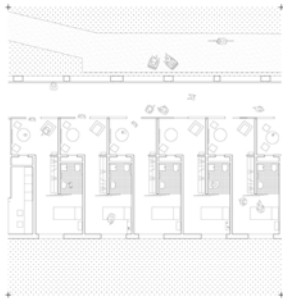
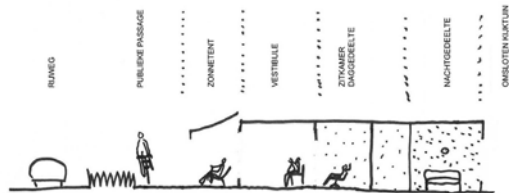


Elemental - incremental housing in open source - Alejandro ARAVENA



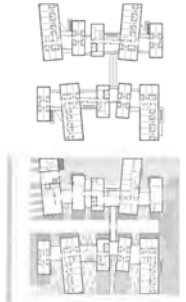
Elemental - incremental housing in open source - Alejandro ARAVENA

PROPOSING PUBLIC-PRIVATE SEQUENCES - A "VESTIBULE"



51n4e - Elderly housing in Nevele, Belgium

PROGRAMMING MULTIPLE LIVING AREAS ON VARIOUS FLOORS



Elizabeth Naud Et Luc Poux Architectes - 160-unit home for dependent elderly people in Villejuif, France

SENIOR HOUSING IN DENSE URBAN ENVIRONMENT



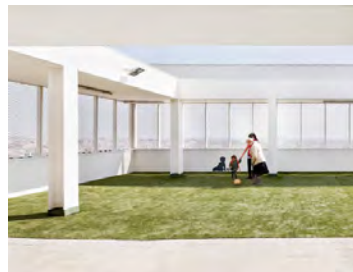
AZC Atelier Zündel Cristea - Notre Dame de Bon Secours (Elderly home, healthcare, nursery, parking lots) in Paris, France

SENIOR HOUSING ON THE TOP FLOORS + NURSERY ON THE GROUND FLOOR



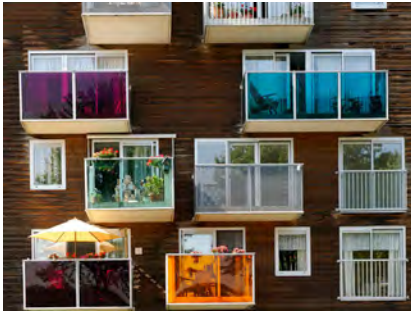
AZC Atelier Zündel Cristea - Notre Dame de Bon Secours (Elderly home, healthcare, nursery, parking lots) in Paris, France

URBAN HIGH-RISE & PUBLIC FACILITIES TO SHARE WITH GRAND-CHILDREN



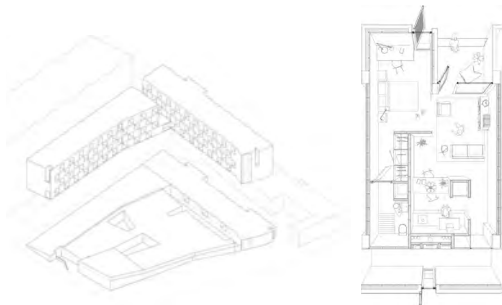
Pau Vidal Sergi Pons and Ricard Galiana- Torre Júlia in Barcelona, Spain

EXTENDED DENSITY & PROFITABILITY "WITHIN" THE RULES



MVRDV - Wozoco, 100 apartments for elderly inhabitants, Amsterdam-Osdorp, The Netherlands

LOGGIA WHERE DOMESTIC AND CIVIC ACTIVITIES OCCUR



GRND82 - 85 sheltered housing units for senior and public facilities in Barcelona, Spain

**STUDENT APARTMENTS PLANNED AND OPTIMISED
TO BE USED AS APARTMENTS FOR THE ELDERLY IN 2025**



RECONVERSION OF A DEPARTMENT STORE



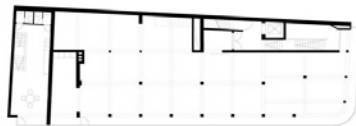
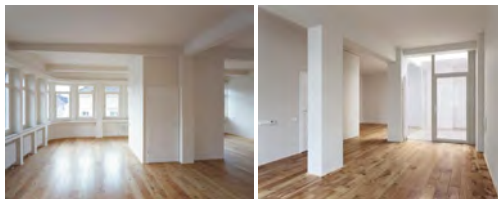
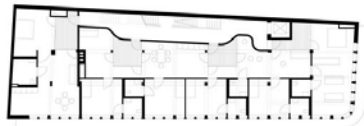
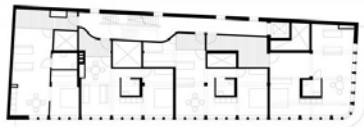
Gemeinschaftsterrasse

4 Barrierefreie Wohnungen

4 Barrierefreie Wohnungen

Funktionsraum

Drogeriemarkt



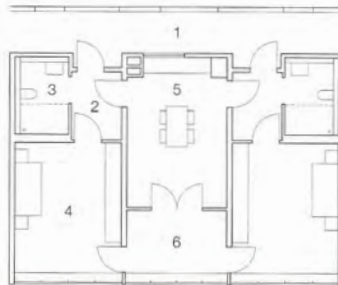
BeL - Department store reconverted in mixed used building (retail, gastronomy, communal roof, shared accommodation for seniors, internal courtyards) in Cologne, Germany

SHARING FACILITIES TO INCREASE ACCESSIBLE SPACE



senior living unit floor plan
scale 1:200

- 1 access balcony
- 2 entrance
- 3 bathroom
- 4 living room
- 5 kitchen
- 6 conservatory



CHILD CARE + SENIORS = INTERACTION TO COUNTER SOCIAL ISOLATION



Kohlhoff + Kohlhoff - Multigenerational house (child care for 120 children + assisted accommodation for seniors) in Stuttgart, Germany

INTER-GENERATIONAL HOUSING: ACCESS BALCONIES & COMMUNAL GARDENS



BKK-3 - Miss Sargfabrik (multi-generational housing + kitchen, library, media-room, laundry and youth-club) in Vienna, Austria



Human-free space



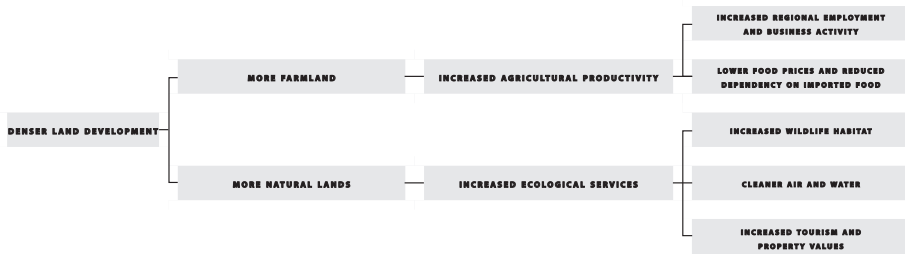
Ecoduct The Borkeld in the Netherlands

IMPACTS OF URBANITY

PRIMARY IMPACTS

SECONDARY IMPACTS

ECONOMIC OUTCOMES

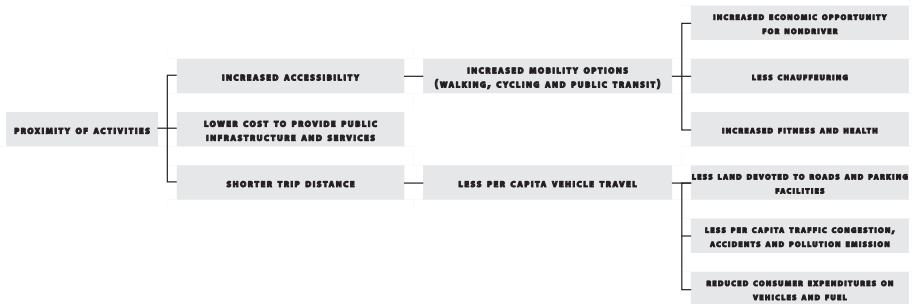


IMPACTS OF URBANITY

PRIMARY IMPACTS

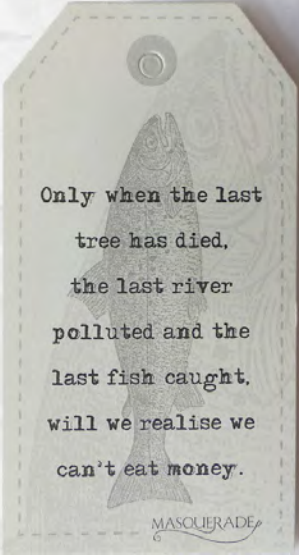
SECONDARY IMPACTS

ECONOMIC OUTCOMES



AANBEVELINGEN

- Stop aansnijden woonuitbreidingsgebieden behalve nabij openbaar vervoer.
- Stop verkavelen met lage dichtheid of in buitengebied, stop vrijstaande woningen.
- Stop uitlijnen kroonlijsthoogtes. Invoeren van minimum kroonlijsthoogtes.
- Stop aansnijden open ruimte; bebouwingsgraad **van 32% naar 20%; uitdovingsbeleid.**
- Minstens 60 woningen per hectare. **Densiteit + mix + nabijheid.**
- Flexibele “gebouwen” ipv vaste programma’s.
- Minstens **25% beschermd natuurgebied.**
- Transit oriënted development. **M-score in EPC?** Reductie parkeernormen
- Transversale task force ruimtegebruik & klimaat.



Only when the last
tree has died,
the last river
polluted and the
last fish caught,
will we realise we
can't eat money.

MASQUERADE
6

CREDITS

Content: BOGDAN & VAN BROECK

Graphics: Sarah Poot